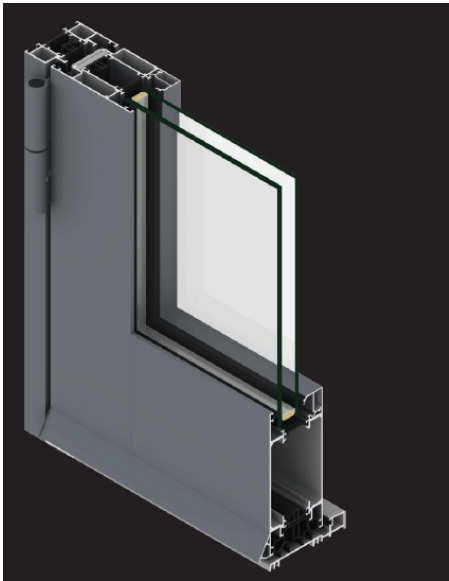
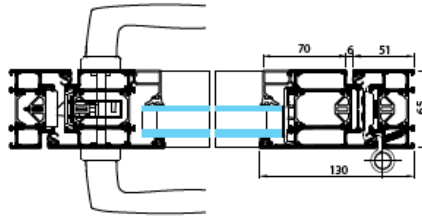


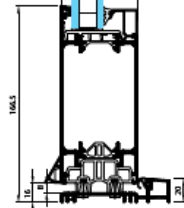
Exemples de portes :



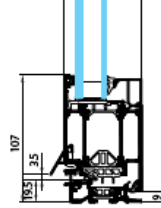
Porte simple action 1 vantail, ouverture extérieure



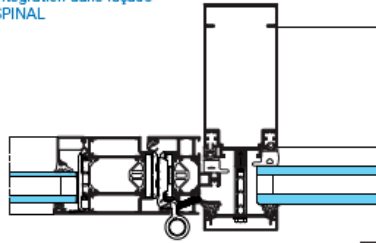
Coupe basse sur ouvrant avec plinthe, ouverture extérieure



Coupe basse sur ouvrant périphérique, ouverture intérieure

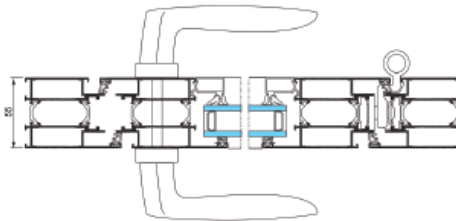


Intégration dans façade SPINAL

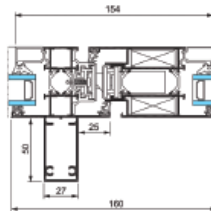


Coupes

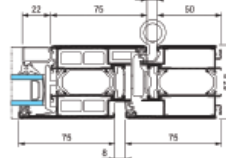
Porte simple action



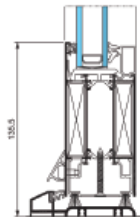
Ensemble composé



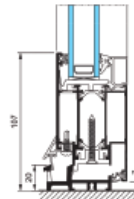
Porte simple action renforcée



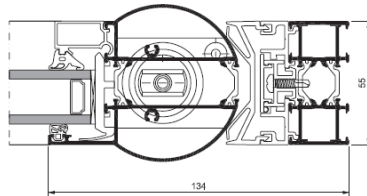
Porte simple action avec plinthe



Variante seuil PMR avec ouvrant périphérique en ouverture intérieure

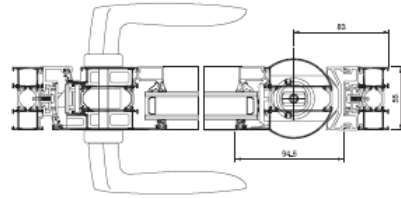


Exemples de portes anti-pince doigts :

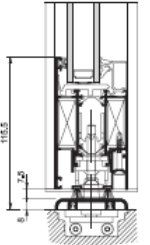


Anti-pince-doigt côté articulation 100%
 rupture de pont thermique ouvrant/dormant

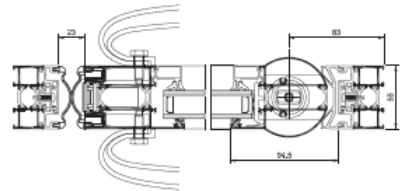
Porte tube simple action
 anti-pince-doigt niveau 1



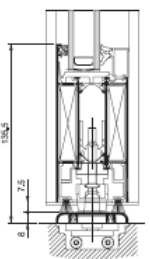
Seuil plat
 ouvrant
 périphérique



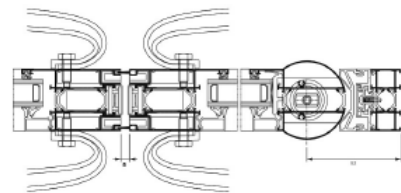
Porte tube simple action
 anti-pince-doigt niveau 2



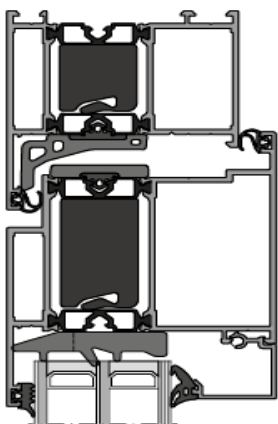
Seuil plat
 avec plinthe



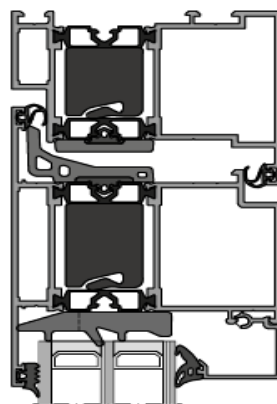
Porte tube va-et-vient



Porte haute isolation :



Ouverture vers l'intérieur



Ouverture vers l'extérieur

Exemple de porte repliable :

